

EAST AFRICA REGION

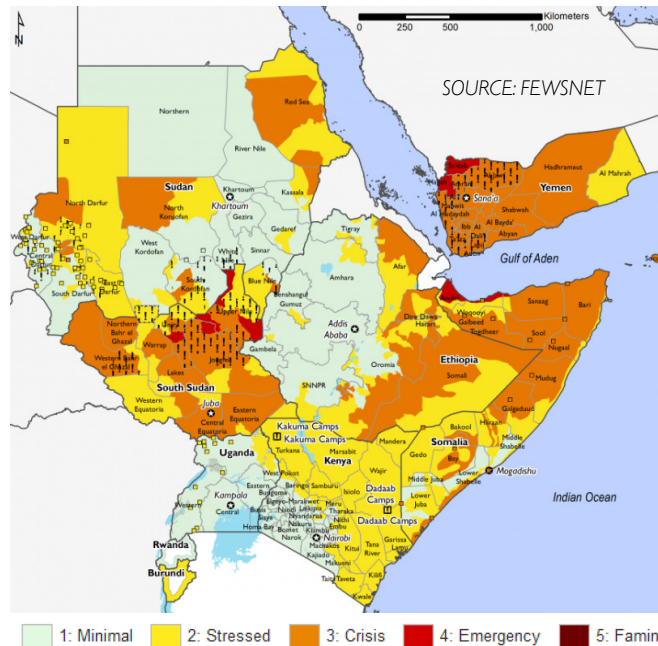
SITUATION REPORT | AUGUST 01 - AUGUST 31, 2019

Key messages

- Drought:** An estimated 15 million people are in need of urgent humanitarian assistance across the Horn of Africa including northern Uganda due to a prolonged drought as a result of below average seasonal rainfall. This has led to loss of livestock due to deterioration of farmland and pastures, a spike in food prices and a reduction in the availability of water in most parts of Somalia, Ethiopia and Kenya.
- Food security outlook:** Poor and internally displaced (IDP) households in conflict-affected areas in Ethiopia and Sudan are expected to face Crisis (IPC Phase) or worse outcomes through late 2019. IDPs in Gedeo Zone of SNNPR region of Ethiopia have missed three agricultural seasons and are not expected to have own production to meet their food needs until November/December 2019. IDP and poor households in SPLM-N controlled areas of South Kordofan and parts of Jebel Mara in Darfur have limited access to food and labor markets, resulting in large food consumption gaps, and they are likely to be in Emergency (IPC Phase 4) through September. In Sudan more broadly, deterioration in national macroeconomic indicators and below-average crop production have driven sorghum prices 100-300 percent higher than the five-year average. Household purchasing power and coping strategies have been eroded while food consumption gaps have expanded, exacerbating widespread acute food insecurity. (FEWS NET, August 2019 East Africa key message update)
- World Vision response:** World Vision is responding to the needs of families in crises in South Sudan, Ethiopia, Kenya, Somalia, Sudan, Uganda, Rwanda, Burundi and Tanzania. Large-scale, long-term lifesaving assistance is needed through 2019 to respond to the needs of populations affected by conflict, threatened by diseases and natural disasters like drought and floods. World Vision is providing education opportunities for school going children who are currently out of school, bringing clean water to populations that lack access, and improving access to sanitation facilities.

Food security outlook

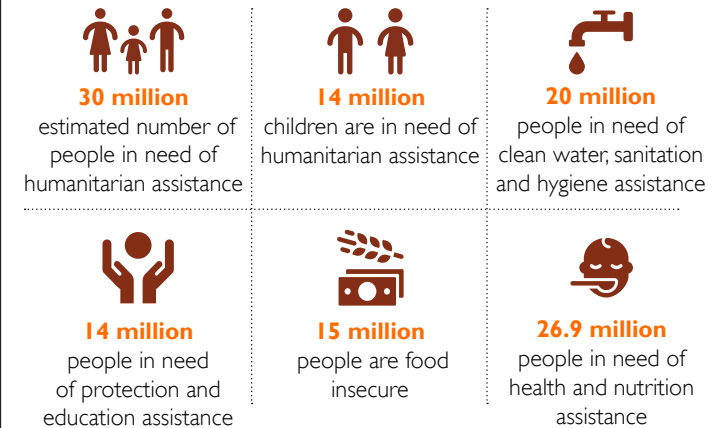
October 2019 - January 2020



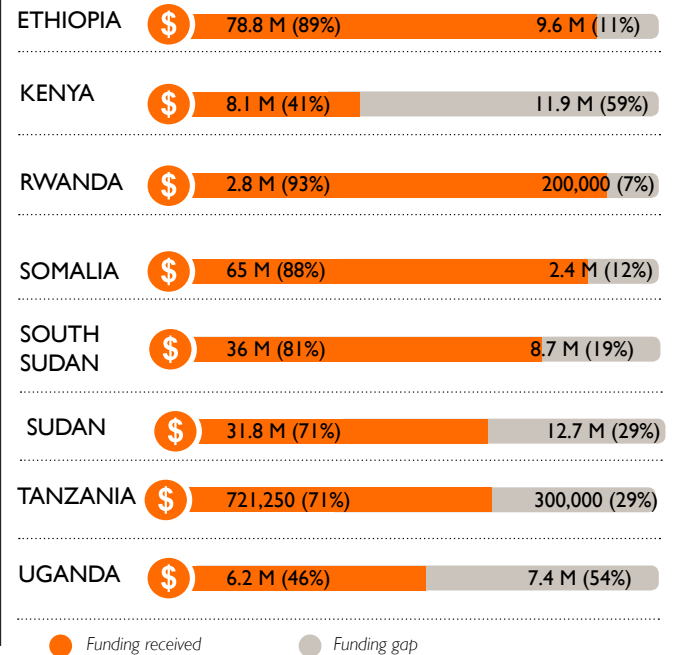
Gaps and needs

- As of late June, more than 47,000 South Sudanese refugees have returned to South Sudan since the signing of the September 2018 peace agreement, while nearly 73,000 Burundian refugees have repatriated to Burundi since September 2017. An estimated 4.28 million refugees remain displaced in refugee settlements across the region, primarily due to protracted or on-going conflict and insecurity. Food and non-food assistance have upheld Stressed! (IPC Phase 2!) outcomes in most refugee settlements through July. In settlements in Uganda, however, anticipated funding pipeline breaks are expected to lead to ration cuts as early as August, which would likely lead to Crisis (IPC Phase 3) outcomes. Crisis (IPC Phase 3) outcomes are prevalent among IDP settlements in Somalia. (FEWS NET, August 2019 East Africa key message update)

Humanitarian needs



Funding needs



*All financial figures in US\$

The boundaries and names shown and the designations used on these maps do not imply official endorsement or acceptance by World Vision International

Creation date: 27 September 2019

Sources: UNICEF, FEWSNET UNOCHA, IOM, UNHCR, WHO, IPC, Sudan 2019 HNO, World Vision, ACAPS Thematic Report

EAST AFRICA REGION

SITUATION REPORT | AUGUST 01 - AUGUST 31, 2019



Situation overview

- **Ethiopia:** The food security situation is deteriorating in southern and southeastern pastoral areas of Somali, Bale lowlands, parts of Guji, and East and West Hararghe zones of Oromia due to delayed, erratically distributed, and below normal cumulative Gu/Genna rainfall.
- **Kenya:** According to the Long Rains Assessment (LRA), the nutrition situation has worsened due to food insecurity compounded by high morbidity, limited access to health and nutrition services. An estimate of 623,814 children are in need of treatment for acute malnutrition and 69,325 pregnant and lactating women require treatment for malnutrition.
- **Rwanda:** According to UNHCR, Rwanda hosts 149,060 refugees as of 31st July 2019. World Vision continues to respond to the needs of refugees living in refugee camps.
- **Somalia:** An estimated 2.6 million people across Somalia remain internally displaced. Post-Gu assessment results indicate that most of the 14 major Internally Displaced Person (IDP) settlements are in Crisis (IPC Phase 3) or Stressed (IPC Phase 2) in the presence of humanitarian assistance.
- **South Sudan:** IPC report released in July indicates that in the presence of Humanitarian Food Assistance, a total 6.87 million people (60% of the population) in South Sudan will face Crisis (IPC Phase 3) acute food insecurity or worse, with an estimated 50,000 people in Catastrophe (IPC Phase 5).
- **Sudan:** Months of anti-government protests that persisted even after the April military takeover further worsened the economic situation. Poor macroeconomic conditions such as high inflation, shortage of hard currency, and fuel largely continued to drive up the cost of commodities, including agricultural inputs.
- **Tanzania:** The plan by the government of Tanzania and Burundi to repatriate Burundian Refugees starting in October 2019 created tensions amongst the refugees and humanitarian refugees working in the camps.
- **Uganda:** There is need for longer term funding especially under environmental protection. Some of the interventions are not short terms and require sustainable funding at least for one year.

Response achievements*

Reporting period August 01 - August 31, 2019

*Adults and children reached across 8 countries in East Africa



1,248,330

people reached with food security and livelihoods



685,882

people reached with water, sanitation and hygiene assistance



357,221

children reached through education interventions



1,622,148

people reached with food assistance



503,457

people reached with nutrition assistance



596,211

people reached with shelter and essential relief items



229,738

people reached through protection interventions



246,532

people reached with health assistance

Primary contact information

Patricia Gimode

Interim Regional Humanitarian & Emergency Affairs Director

E-mail: patricia_gimode@wvi.org

Skype: pgimode

World Vision donors and partners

