

EAST AFRICA REGION

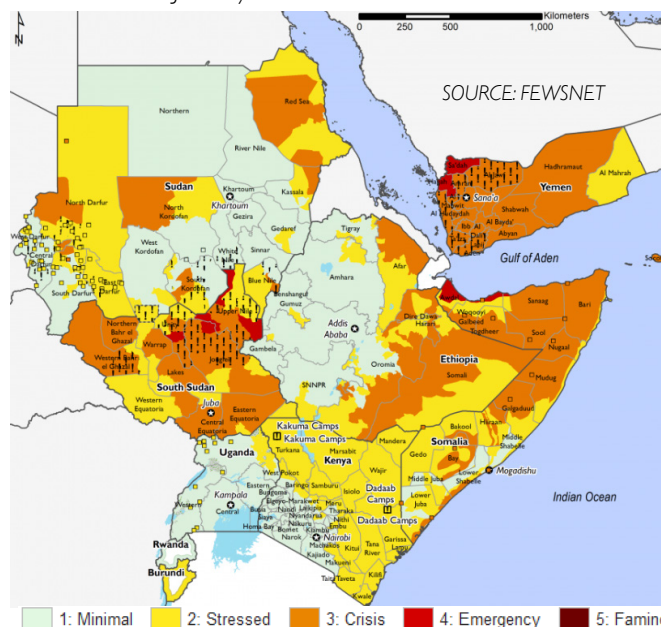
SITUATION REPORT | SEPTEMBER 1 - SEPTEMBER 30, 2019

Key messages

- Food security outlook:** Across the Horn of Africa, Stressed! (IPC Phase 2!) or Crisis (IPC Phase 3) outcomes are present in many pastoral and agropastoral areas, including southeastern and northeastern Ethiopia, most of Somalia, and northern and eastern Kenya. The June-August cereal harvests were below-average to failed, with cereal production estimated at 60 to 90 percent below average in Somalia and Kenya. In areas that receive June-September rainfall, significant crop recovery has been realized in northwestern Somalia, western Kenya, and Karamoja of Uganda, though cereal production is still likely to be below average. In Ethiopia, the rains have driven recovery of Meher crops, though localized flooding in parts of western Ethiopia have caused crop loss. (FEWS NET, September 2019 East Africa key message update)
- Malnutrition:** The 2019 Global Report on Food Crises lists Ethiopia, Sudan and South Sudan among the worst food crises in 2018. Drought, flooding and erratic rains led to high levels acute and chronic malnutrition in children. Mothers and caregivers often face challenges in providing children with the key micronutrients they need at critical growth periods in food crises. This is reflected in the dimly low number of children consuming a minimum acceptable diet.
- World Vision response:** World Vision is responding to the needs of families in crises in South Sudan, Ethiopia, Kenya, Somalia, Sudan, Uganda, Rwanda, Burundi and Tanzania. Large-scale, long-term lifesaving assistance is needed through 2019 to respond to the needs of populations affected by conflict, threatened by diseases and natural disasters like drought and floods. World Vision is providing education opportunities for school going children who are currently out of school, bringing clean water to populations that lack access, and improving access to sanitation facilities.

Food security outlook

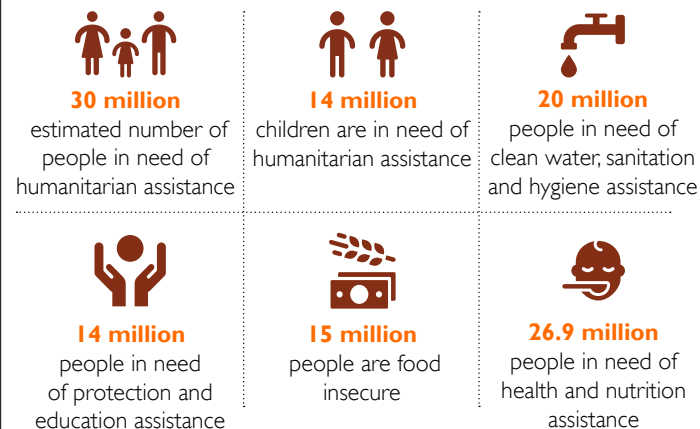
October 2019 - January 2020



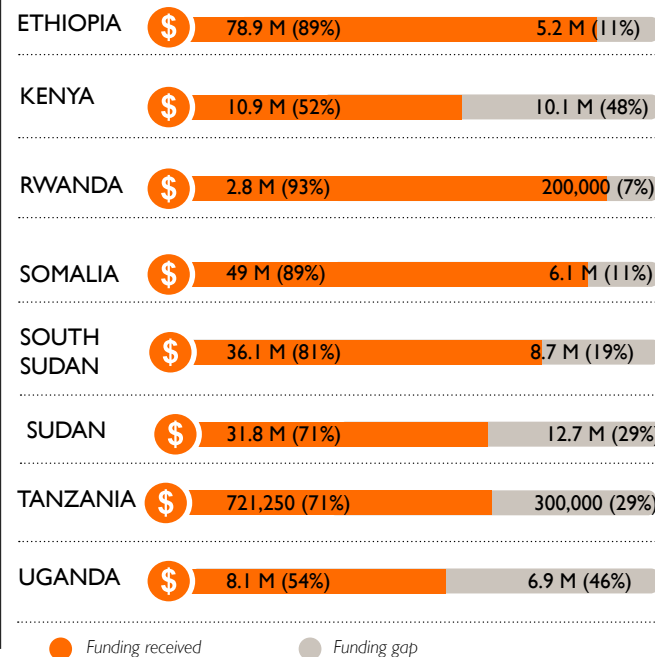
Gaps and needs

- Below-average rains, conflict and economic crisis continue to drive food insecurity. Ethiopia, Sudan and South Sudan are expected to remain among the world's most severe food crisis in terms of people affected. In comparison to peak 2018 levels, updated projections for 2019 as of July indicate that food insecurity levels will likely be higher in South Sudan and Sudan, remain stable in Ethiopia and Uganda, and be lower in Kenya and Somalia. Additional investments in resilience and on adaptation to climate change are required to provide households with a buffer against future shocks and stop the cycle of recurring food crisis. Empowering women, nourishing and educating children, improving rural infrastructure and reinforcing social safety nets and risk transfer are some of the key activities to build resilience in the region. (IGAD/FSIN)

Humanitarian needs



Funding needs



*All financial figures in US\$

The boundaries and names shown and the designations used on these maps do not imply official endorsement or acceptance by World Vision International

Creation date: 23 October 2019 Sources: UNICEF, FEWSNET UNOCHA, IOM, UNHCR, WHO, IPC, Sudan 2019 HNO, World Vision, ACAPS Thematic Report, FAO, IGAD, FSIN

EAST AFRICA REGION

SITUATION REPORT | SEPTEMBER 1 - SEPTEMBER 30, 2019

Situation overview

- **Ethiopia:** Due to below average Belg and Deyr/Hagaya rains large areas of Somali, Eastern Oromia, and northeastern Afar regions are anticipated to remain in Crisis (IPC Phase 3) through January 2020.
- **Kenya:** According to the Ministry of Health, Disease outbreak situation report as at 30th September 2019, drought conditions have exacerbated ongoing disease outbreaks, Since January 2019, Cholera outbreak has been reported in twelve counties.
- **Rwanda:** The Government of Rwanda, UNHCR and the African Union signed a Memorandum of Understanding to set up a transit mechanism for evacuating refugees out of Libya. The Government of Rwanda will receive and provide protection to refugees and asylum-seekers who are currently being held in detention centers in Libya and will be transferred to safety in Rwanda on a voluntary basis.
- **Somalia:** Nearly a million children under-5 years are projected to be acutely malnourished if no timely humanitarian aid is availed.
- **South Sudan:** To prevent the potential spread and ensure readiness for any eventualities, a preparedness and response planning has been activated in the Western Equatoria zone led by World Vision in partnership with the Ministry of Health, World Health Organisation and other partner agencies.
- **Sudan:** Sudan's Federal Ministry of Health (FMOH) announced the outbreak of Cholera in Blue Nile State . Number of suspected cholera cases continues to rise, with 226 cases—including eight deaths— reported in Blue Nile and Sennar states as of 30 September 2019.
- **Tanzania:** The Government of Tanzania has said that repatriation of Burundian Refugees will be on voluntary basis as per the international refugees policy.
- **Uganda:** Ebola remains a big threat especially in Kyaka II & Kyangwali settlements where refugees from DRC Congo are still being received. Awareness campaigns have been ongoing and World Vision staff in the target districts have been trained in Ebola infection prevention and control and case management. Ebola messaging has been increased and IEC materials distributed to the communities in risk areas.

Response achievements*

Reporting period September 01 - September 30, 2019

*Adults and children reached across 8 countries in East Africa



1,142,118

people reached with food security and livelihoods



597,573

people reached with water, sanitation and hygiene assistance



244,377

children reached through education interventions



691,908

people reached with food assistance



564,932

people reached with nutrition assistance



199,632

people reached with shelter and essential relief items



80,454

people reached through protection interventions



251,553

people reached with health assistance

Primary contact information

Patricia Gimode

Interim Regional Humanitarian & Emergency Affairs Director

E-mail: patricia_gimode@wvi.org

Skype: [pgimode](#)

World Vision donors and partners



The boundaries and names shown and the designations used on these maps do not imply official endorsement or acceptance by World Vision International

Creation date: 23 October 2019 Sources: UNICEF, FEWSNET UNOCHA, IOM, UNHCR, WHO, IPC, Sudan 2019 HNO, World Vision, ACAPS Thematic Report, FAO, IGAD, FSIN