

## Key updates

- Ongoing military clashes between government forces and the ADF continue to hamper access to affected communities, increasing risk to the population if the sick cannot easily be reached for treatment.
- Additionally, the number of civilian casualties, including children, is 47 (Nov 19) and rising.
- The Ervebo vaccine which has been deployed in Ebola hotspots of the DRC is now approved by WHO and the European Commission, and at the same time a second vaccine produced by Johnson and Johnson has been introduced to fight the epidemic.
- WHO reports a general decline in Ebola cases. Current hotspots are Mabalako and Bingo, where World Vision is operational.
- In a bid to flush out the disease WHO has adopted a door-to-door outreach strategy in the complex health zones.
- The response team call for a much deeper and strategic post-Ebola transition that includes essential services; nutrition, water, stability and social-conflict issues.
- World Vision is employing an integrated approach through community engagement and awareness raising programmes, food security and livelihoods, Water, Sanitation and Hygiene (WASH) as well as protection and psychosocial support. World Vision has reached 673, 549 people, of these 280, 152 are children. The goal is to reach a million people by year end.
- In total 39,337 people affected by Ebola have received food through World Vision, supported by WFP. Altogether 75837.55 tonnes of food have been distributed to survivors, contacts, patients to safeguard vulnerable children from immediate and long-term risks.
- World Vision is working with faith leaders and government psychologists to deliver a holistic support system to affected people.
- There is still persistent community distrust and resistance to be hospitalized, and regular attacks on health institutions as well as health workers responding to the Ebola disease.

**Total number of cases: 3,296**  
(3,178 confirmed, 118 probable)

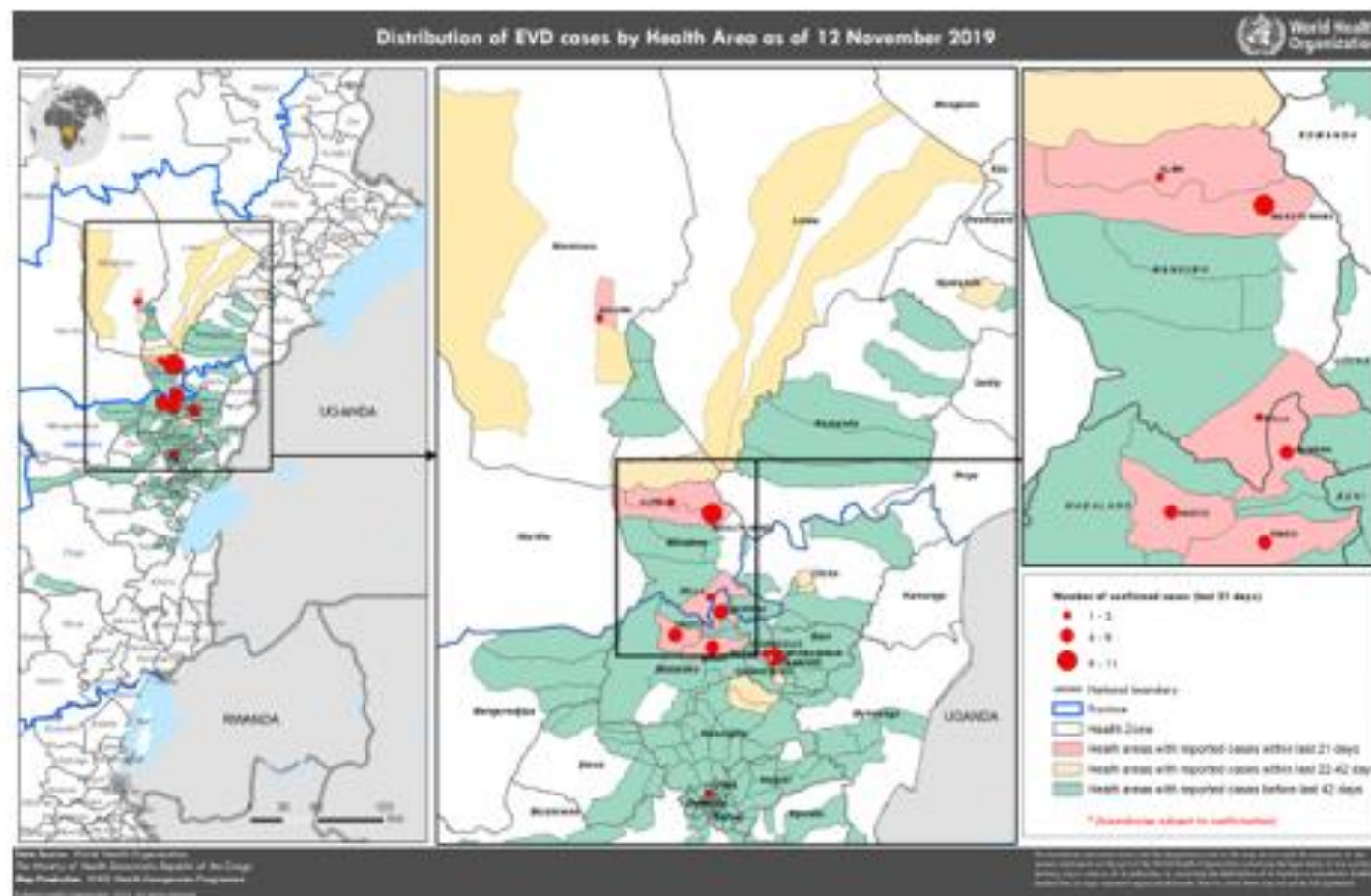
**Total number of deaths: 2,196**  
(lethality 67%)

**Total vaccinated: 253,545 (Combined)**

**Total survivors: 1,070**

\* These numbers fluctuate on a daily basis due to many factors, including continuing monitoring, investigation and reclassification of cases

## Current spread of disease



### Response highlights



#### RELIGIOUS LEADERS AND CHANNELS OF HOPE ACTION TEAMS TRAINED

- **35** people comprising of faith-leaders and front line responders to the Ebola Crisis were equipped to train trainers using World Vision's Channels of Hope methodology of community engagement and behaviour change.



#### PROTECTION & PSYCHOSOCIAL SUPPORT

- **22** people including officials from the Ebola Commissions of Beni, Butembo and Mabalako as well as faith leaders and front line community mobilisers have been skilled to train trainers on Psychological First Aid.
- **145** Children have been identified to benefit from professional psychosocial support and Psychological First Aid actions in the next two weeks.
- The Health Ministry has requested World Vision to train its psychologists on Psychological First Aid (PFA) for children. In addition WHO needs World Vision to train survivors currently working in treatment and transit centres.



#### FOOD ASSISTANCE FOR AFFECTED PEOPLE

- **798** contacts received **15,640** tonnes of food, **196** survivors and patients **14,689** MT, and **916** discharged non-cases supported with **44,884** MT of food.



#### HYGIENE KITS DISTRIBUTED

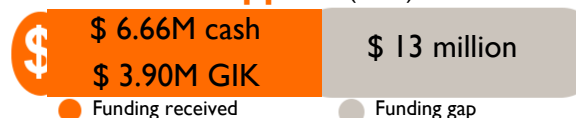
- Used **WAGTECH** kit to conduct bacterial analysis for water samples from 50 water points from Beni, Butembo, Katwa and Kalunguta.
- Initial indications suggest about 60% of the samples are contaminated with Ecoli 1, which is a strong indication of recent sewage or animal waste contamination.
- **35** sites identified and GPS mapped for construction of new latrines.

- **9** sites identified and GPS mapped for drilling of boreholes fitted with solar powered motorised units
- **54** for water point construction.

### What is World Vision's role in the ebola response?

- WV DRC is focusing on risk communication and risk management, WASH, protection, food security and livelihood in the affected Health Zones of North Kivu province: Goma, Beni, Butembo, Katwa, Oicha, Katwa, Masareka Kalunguta, Vuhovi, Lubero, Ma-gurudjipa, Rutshuru and Mabalako.
- Through faith-leaders, women's and youth associations, we inform communities about Ebola, how to protect themselves, care for the sick and contain the spread of the epidemic.
  - We provide food to at-risk populations to realise objectives of 3 key pillars to care, contain and protect.
  - We provide psychosocial support to help affected families, especially children.
  - We support prevention measures in schools to create a protective environment.
  - We make water, hygiene and sanitation available in communities, schools and health centres.
  - We respond to vulnerabilities that pre-existed the Ebola outbreak and which actively contribute to its spread.
  - We coordinate with our partners to ensure the physical, emotional and psychological well-being of children.

### World Vision appeal (US\$)



### RESPONSE DONORS



### Response achievements



498

women and youth association members trained



361

faith leaders trained on Ebola



201

action team members trained on Ebola



510

community health workers trained on Ebola



492

teachers trained on Ebola



640,996

people reached with life-saving messages



39,337

Quarantined contacts and patients received 75837,55 MT of food



10,461

Families, schools and churches reached with 11,065 hygiene kits



640,996 people including 266,792 children received prevention/treatment information and/or health monitoring

### Primary contact information

**Helen Barclay-Hollands**, Director – Eastern Zone  
 Email: Helen\_Barclay-Hollands@wvi.org  
 Skype: hdbarclay

**Jimmy Tuhaise**, Response Director  
 Email: Jimmy\_Tuhaise@wvi.org  
 Skype: jimmy.tuhaise2