

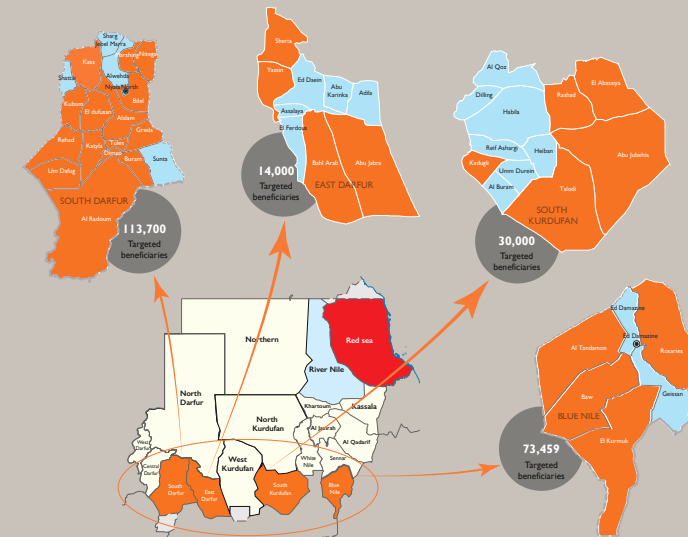
General situation

- There has been a sharp increase in the number of coronavirus cases in Sudan, with the virus now spread across all the 18 states. The cumulative confirmed cases are so far 2,591 including 105 fatalities and 247 recoveries, according to the Federal Ministry of Health.
- A three-weeks long lockdown imposed in Khartoum since mid-April was on 9 May extended for nearly two weeks as part of containment measures to prevent the spread of coronavirus. Furthermore, South Darfur state which has recently recorded 16 cases, is the latest state to be placed on a week-long lock down.
- All airports, ports and land crossings remain closed to passenger aircrafts, except for humanitarian, commercial and technical support shipments. Additionally, restrictions on all public gathering and movement remain in place.

Impact on programming and operations

- Containment measures taken to prevent the further spread of the coronavirus such as restrictions on movement continue to pose significant challenges for the delivery of existing humanitarian response, as well as disrupting normal working.
- World Vision has enforced all the safety guidelines provided by the government and , to ensure safety of frontline staff, while they continue to support the implementation of our response efforts to COVID-19 and other interventions.
- World Vision's continues to promote preventive measures to prevent the spread of the coronavirus, while ensuring continuity of essential activities to meet the needs of the most vulnerable. To help prevent the spread of the coronavirus, World Vision is further engaging with key community influencers to reinforce preventive behaviours.
- As part of precautionary measures to minimise the risk of exposure to the most vulnerable communities through gatherings and the number of times they have to visit distribution sites, in partnership with the World Food Programme, World Vision is providing double-ration distributions to cover beneficiaries for two months.

Map showing WV COVID-19 response target population



2,591
COVID-19 cases confirmed
As of 18 May 2020

Key concerns

- World Vision is greatly concerned about the continued rapid rise in the number of confirmed coronavirus cases in Sudan and the impact on the healthcare system and its capacity to cope.
- COVID-19 is compounding an already dire economic and humanitarian situation. World Vision is concerned about the risk the spread of the virus poses on ongoing humanitarian assistance for the most vulnerable populations.
- A continued rise in infections, could push more children and their families into extreme vulnerabilities, particularly as their ability to meet their basic needs is eroded from loss of their sources of livelihoods or means of earning income.



World Vision is engaging with community leaders and the Ministry of Health to spread and reinforce COVID-19 preventive measures through mass media.



Handwashing stations have been installed in our food distributions sites such as this one in East Darfur state where beneficiaries wash their hands before receiving food.

COVID-19 preparedness and response pillars

World Vision is represented in various coordination clusters at both federal and state level, and contributing to four of eight COVID-19 pillars as per the Country Preparedness and Response Plan (CPRP) as below:

- Risk communication and community engagement (RCCE).
- Infection prevention and control (IPC).
- Surveillance, rapid response teams and case investigation.
- Operational and logistical support to MoH for COVID-19 response.

Priority response sectors at a glance



Support frontline staff with personal protective equipment, support health facilities and Ministry of Health to be better prepared and adequately respond to COVID-19



Children and their communities have access to potable water and practise proper handwashing



Provide safe hygiene and sanitation practices including provision of handwashing stations, water, soap and sanitisers.



Provide food and livelihoods assistance to vulnerable children and their families for proper nourishment through food and cash assistance and safety net programmes



Reduce the impact of COVID-19 on the wellbeing of children

Latest achievements for the reporting period

- World Vision continued with its community engagement efforts to limit the spread of the coronavirus, reaching at least 110,000 people through promotion and reinforcement of preventive behaviours, including the provision of materials on mental health and psychosocial support.
- To further support the promotion and practice of preventive measures, communities were provided with preventive materials as well as hygiene kits and supplies, as well as installation and maintenance of community-level handwashing facilities.
- World Vision continues to provide ongoing support to 53 health facilities in our operational areas of South Darfur, East Darfur, Blue Nile and South Kordofan states to strengthen their COVID-19 prevention and response capacity, while ensuring the provision of essential health services is not disrupted.

- World Vision continued to partner with key community influencers such as faith leaders in the dissemination of COVID-19 preventive measures, this also included facilitating community leaders to amplify prevention messages through radio and television.
- As part of measures to ensure the most vulnerable households are food secure, World Vision provided food assistance to over 90,000 internally displaced persons across two IDP camps in South Darfur state. In total, 901 metric tons of cereals, pulses, vegetable oil and salt was distributed.
- World Vision provided 32,117 people living in Dereige camp for IDPs in South Darfur with cash and voucher assistance, to support them to meet their basic household needs.



515,702

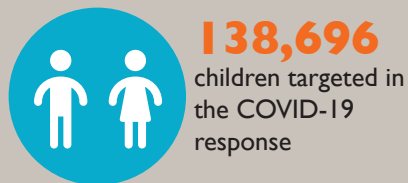
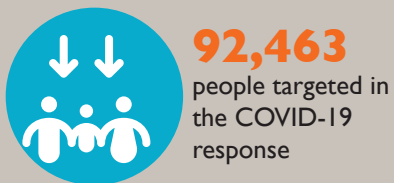
cumulative number of people reached with COVID-19 preventive measures and other lifesaving interventions since March 2020.

Our contributions at a glance



Gaps and challenges

- With a rapid increase in the number of infections, there is an urgency to scale up the strengthening of health systems including preparedness to handle potential caseloads, equip frontline health workers, while ensuring uninterrupted essential health services in health facilities, run by World Vision.
- Protective equipment to ensure the safety of frontline workers amid an alarming rise in recorded coronavirus cases, are in short supply.
- There is also a need to strengthen risk communications and infection, prevention and control interventions.
- Measures to reduce the further spread of coronavirus such as restrictions on movement and lockdown continue to affect the effective delivery of lifesaving interventions, including limiting access to target populations.
- Logistical challenges including fuel shortages and resulting high transportation costs are hampering the delivery of critical lifesaving supplies such as protective equipment and food supplies to field locations.



US\$500,000
funds raised so far

Donors and Partners

World Vision continues to coordinate closely with the Government of Sudan through the Ministry of Health and Partners to appropriately respond to COVID-19. We are also engaging our established community networks such as the national NGO partners, faith leaders, community committees, and media in awareness creation, promoting and reinforcing preventive measures and behaviours. We are continuously monitoring the situation and engaging with the Government including the Humanitarian Aid Commission, in order to collectively address the emerging challenges.



Global Affairs Canada
Affaires mondiales Canada



Empowered lives.
Resilient nations.



Primary contacts information:

Vincent Edwards | Country Program Director
Email: Vince_Edwards@wvi.org
Cell phone: +249 912 155 667

Jimmy Nadapdap | Operations Director
Email: jimmy_nadapdap@wvi.org
Cell phone: +249 912 168 790

Lucy Murunga | Communications Manager
Email: Lucy_Murunga@wvi.org
Cell phone: +254 721484112



@WorldVisionSud I
Website: www.wvi.org/Sudan