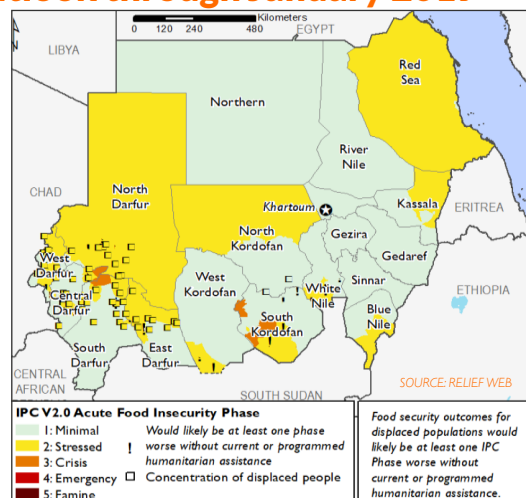


Key messages

- **Humanitarian needs persist:** There are an estimated 763,270 South Sudanese refugees in Sudan (figures by UNHCR). As long as conditions in neighbouring South Sudan do not become conducive for refugees to return, the number of people in need of humanitarian assistance will continue to be on the high, not to mention other vulnerable groups in need of assistance such as the internally displaced persons, returnees and the host community.
- **Urgent attention needed:** With this inevitable, World Vision continues to actively seek for funding in order to provide the much needed assistance by the refugees. World Vision has submitted a concept paper for possible funding in livelihoods, as well, a proposal to provide protection assistance for South Sudanese refugees in South Darfur. Currently World Vision only provides assistance in health, nutrition and food assistance, yet there are critical needs in the sectors of WASH, education, protection and livelihoods.
- **Situation dire for refugees:** Continued arrival of refugees and IDPs (36,510 in November alone) particularly into the state of South Darfur, has increased the magnitude of humanitarian needs, if funding is not made available to respond to these needs, it means they will have to survive on the limited available support, or lack thereof. World Vision is therefore appealing for sustained goodwill from donors.
- **Funding proposals submitted:** World Vision has submitted four project proposals to World Food Programme in order to continue providing food assistance, as the current projects are coming to an end. The projects will be implemented not just in South Darfur, but also East Darfur and South Kordofan.

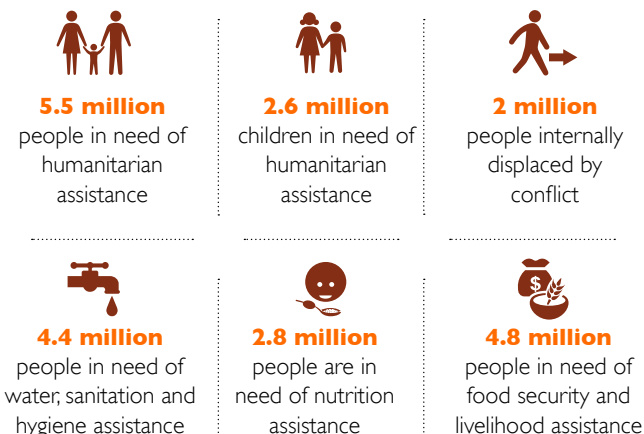
Projected food security outlook through January 2019



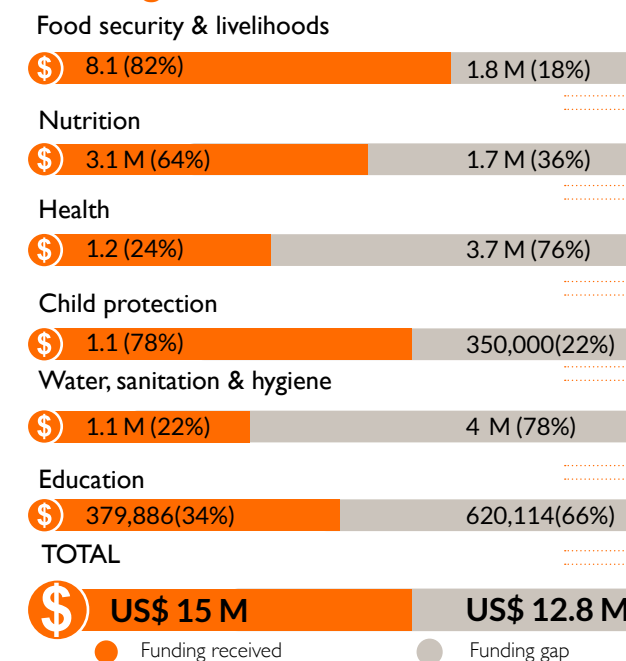
Gaps and needs

- **7 in 10 people have to buy food:** World Vision in partnership with the line ministries and Government agency HAC, conducted a multi-sectoral needs assessment -from 21st October to 15th November 2018- across eight localities in South Darfur. 70% of households said they purchase most of the food they consumed.
- **Families endure tough times:** 62% of the respondents are worried about not having enough food with only 41% able to afford three meals a day. Additionally, over half of the households with children under 5 reported cases of malnutrition which required admission to treatment centres. 70% of the households also said the distance to the health facilities, lack of medicines and medical staff, and the amount of time spent waiting, were the greatest challenges they faced.
- **Need to act with urgency:** The assessment re-affirms the urgency in increasing and sustaining funding to respond to both the current needs and those likely to emerge.

Humanitarian needs



Funding needs



*All financial figures in US\$

Response highlights



FOOD SECURITY & LIVELIHOODS

- World Vision provided food assistance to 90,052 refugees and internally displaced persons in Nyala and Kass, South Darfur.
- World Vision distributed cash worth US\$244,560 to 44,209 IDPs in Otash and Dereige camps, South Darfur.
- World Vision trained 87 Community Action Group members from five localities, better equipping them to reduce their risks of disasters.
- World Vision trained 212 livestock farmers and animal health workers in South Darfur's Katyla locality on livestock management and animal health.
- To boost access to income, 390 families in South Darfur and Blue Nile, were trained and provided with goats and another 210 families trained on poultry management. In Blue Nile, 21 Village Savings and Loans Associations were established.



EDUCATION & PROTECTION

- 71,860 children in South Darfur were provided with a mid-day meal through the school meal programme that encouraged their stay in school.
- 1,373 vulnerable children in Blue Nile received learning materials to boost their education. Additionally, in South Darfur, 681 refugee children were supported with school fees, scholastic materials and school uniforms.
- 1,200 children in South Darfur attended World Vision Child Friendly Spaces, for recreational and psychosocial support.
- To boost household income, 20 women group members in Blue Nile's Wadelmahi locality were equipped with entrepreneurial skills and supported to start income generating activities.



HEALTH & NUTRITION

- 22,054 patients in Blue Nile, South Darfur and East Darfur received free medical consultations and treatment at the 24 clinics that World Vision supports. Other services laboratory, immunisation (of which 4,749 children and women of child bearing age were immunised), reproductive health and health education.
- 9,399 children under five in South Darfur were screened for malnutrition, out of which 655 children were admitted with severe acute malnutrition (SAM) to receive treatment. In Blue Nile, World Vision supported 13 OTP centres, admitting 124 children with SAM, while in East Darfur 5,984 children were screened for malnutrition.
- Refresher training was conducted for midwives, vaccinators and nutrition staff on Community Management of Acute Malnutrition (CMAM) protocol.



WATER, SANITATION & HYGIENE

- World Vision supported the drilling of three boreholes, repairing and maintaining 32 non-functioning hand pumps, installation of two new hand pumps, operation and maintenance of 29 water yards in South Darfur, enabling at least 120,000 people to access water from a clean water source.
- Clean water was also supplied to 20 health facilities and 10 schools in Otash, Kass, Belel and Alsalam localities (South Darfur) and Kubum and Kurmuk (Blue Nile).
- 150 household latrines were constructed to cater for 3,000 new IDPs that arrived in Kass IDP camps.
- An estimated 25,000 people, in Blue Nile, East and South Darfur, were reached with hygiene promotion mainly through environmental clean-up campaigns, household visits, training sessions, dialogues held at water points, and school clubs.

Response achievements

Reporting period November 01 - November 30, 2018

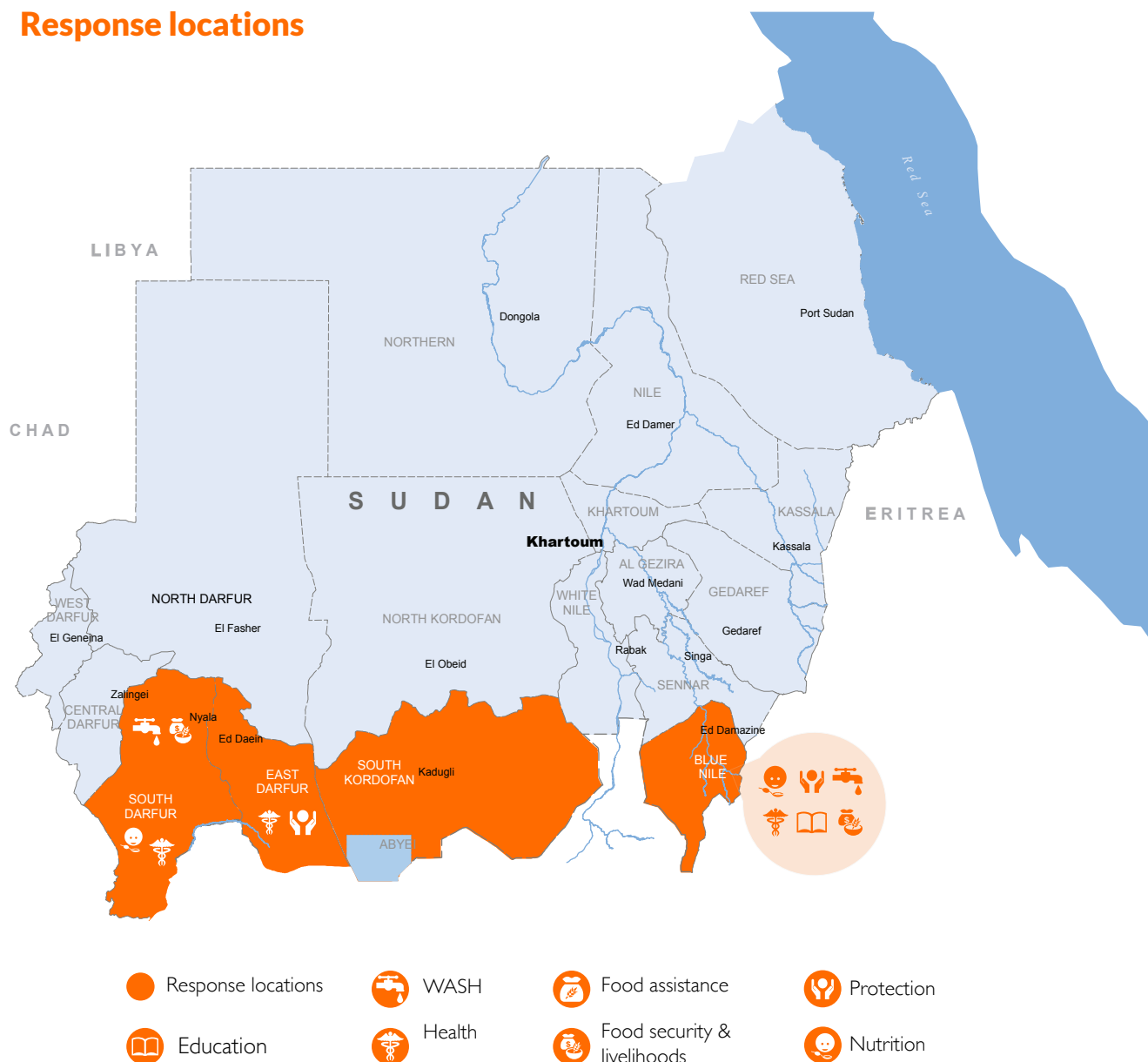


SUDAN

EAST AFRICA CHILDREN CRISIS SITUATION REPORT | NOVEMBER 1 - NOVEMBER 30 2018

World Vision

Response locations



Primary contact information

Vince Edwards
Country Program Director
Vince_Edwards@wvi.org
skype: vedwards1

Jimmy Nadapdap
Operations Director
Jimmy_Nadapdap@wvi.org
skype: jimmynadapdap

Lucy Murunga
Communications Manager
Lucy_Murunga@wvi.org
skype: Lucy_Murunga

National office donors & partners



The boundaries and names shown and the designations used on these maps do not imply official endorsement or acceptance by the World Vision International

Creation date: 10 December 2018

Sources: TRUST.ORG, UNOCHA, WFP, IPC, FEWS.NET, RELIEFWEB.